

Paramus Public Schools

2022-2023 PUBLIC BUDGET HEARING

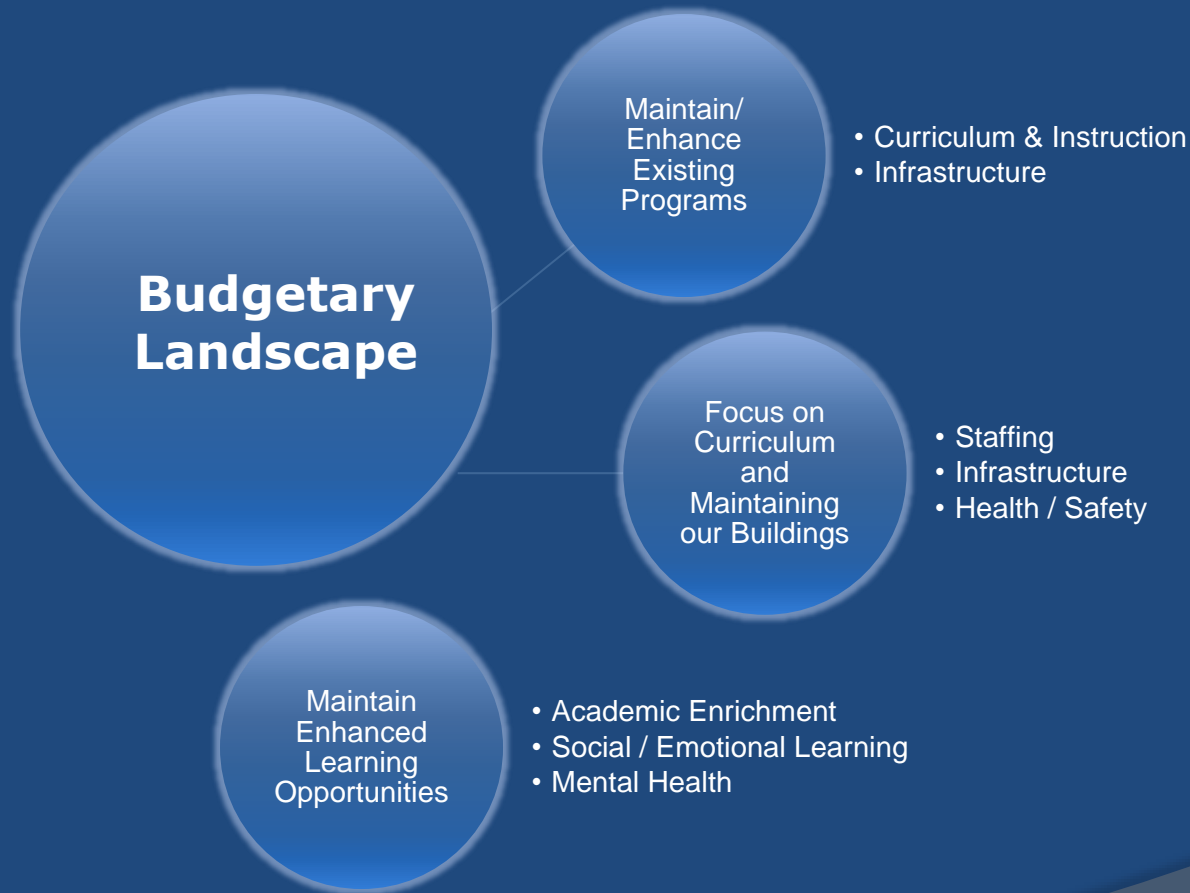
Sean Adams
Superintendent of Schools

Timothy Donohue
Assistant Superintendent of Schools

Brooke Bartley
Business Administrator/Board Secretary

May 2, 2022

Core Components for the 2022-2023 School Year



Budget Summary

- Maintains and enhances existing programs.
- Focuses on curriculum and student supports.
- Provides for staffing levels that maintain the District's current class-size guidelines.
- Provides resources to support District and Board goals.
- Reflects cost saving and efficiency measures.
- Budgeted tax levy at 1.9% tax cap.
- Enhancements to school facilities.
- Additional payment towards debt and budgeted fund balance to reduce tax impact.
- Anticipates increased costs to transportation and energy sectors.

Staffing Enhancements: Highlights

- Enhanced Student Supports
 - Student Personnel Services
 - Social/Emotional Learning Coordinators (middle schools)
 - Additional School Counselor (elementary school)
 - Maintain additional elementary teaching positions to provide optimal class sizes
 - Increased support staff in basic skills
 - Increased teaching and support staff

Program Maintenance & Enhancements

Instructional Program

- Expansion of wi-fi coverage and fiber optic connections
- Security camera upgrades
- Cybersecurity enhancements
- Device refresh for 1:1 Technology Initiative
- Upgrades to classroom instructional technology
- Continued Build-out of Digital Resources
- Digital Curriculum for Social Emotional Learning K-8
- Curriculum Renewal – World Languages, Science, Visual/Performing Arts, as well as Career Readiness, Life Literacies, and Key Skills
- Mental/Social-Emotional Support
- Enhanced use of data specific software to address student individual learning needs

Budget Supports:

The Arts

- Dance, Theater & Music: grades k-12
- Strings, jazz, percussion ensembles
- Middle School Music Labs
- Elementary ukulele education
- Musicals at all school
- Winner of Best Communities for Music
- Model School in the Arts

Athletics and Co-Curricular

- 72 High School Clubs
- 22 Middle School Clubs
- 23 Sanctioned Sports

Honorable Mentions

- Member of four National Honor Societies
- Participants of the Seal of Biliteracy

Advanced Placement Courses

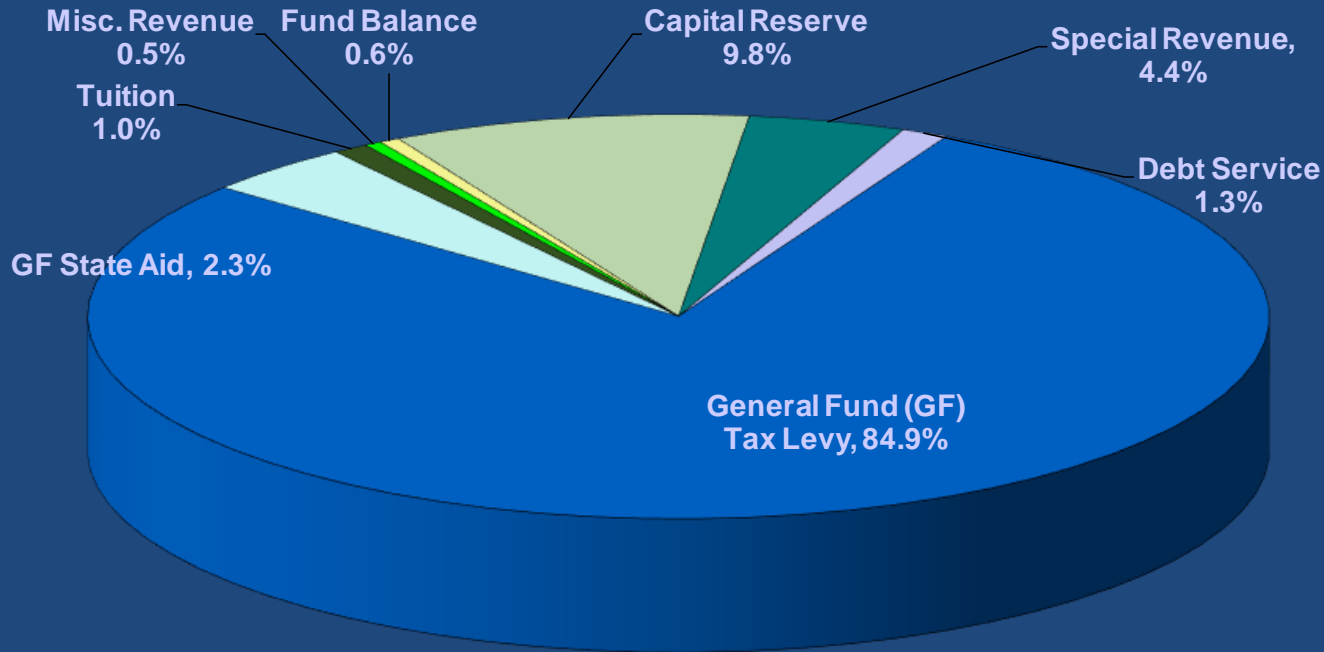
Budget Maintains Current Offerings:

- Literature & Composition
- Language & Composition
- US History I
- US History II
- US Government & Politics
- European History
- Psychology
- Physics I
- Physics II
- Physics C
- Chemistry
- Biology
- Environmental Science
- Computer Science A
- Computer Science Principles
- Calculus AB
- Calculus BC
- Statistics
- Macro/Microeconomics
- Studio Art
- Art History
- Photography
- Music Theory
- German Language & Culture
- Italian Language & Culture
- Spanish Language & Culture

Infrastructure Projects \$9,925,000

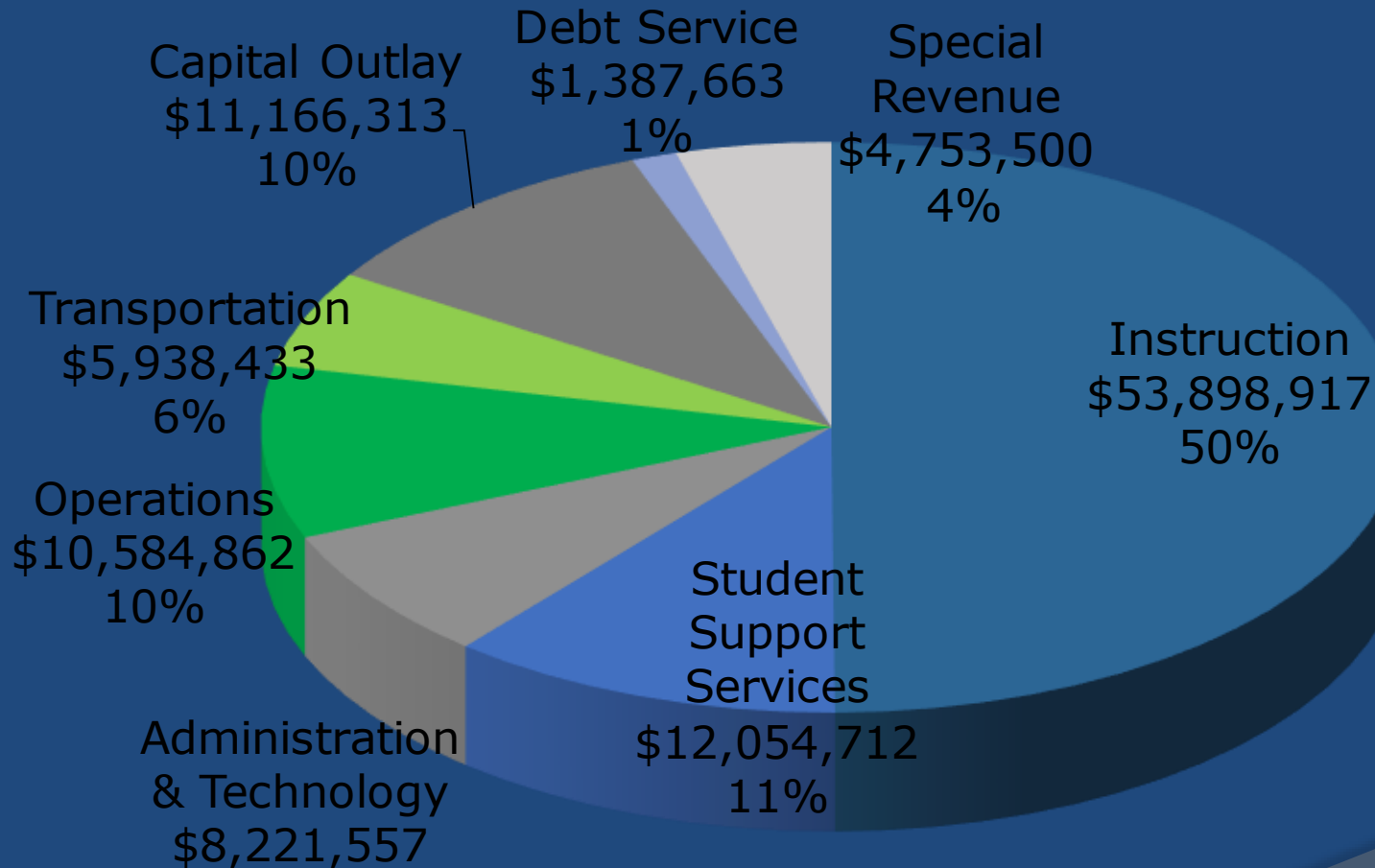
- High School: HVAC Upgrades to Media Center and Auditorium, Paving, Courtyard renovations, bathroom renovations, abatements, masonry, elevator/chair lift, stage floor
- West Brook: drainage issues, abatements, flooring, ceiling and lighting upgrades, bathroom upgrades
- East Brook: abatements and flooring upgrades, masonry and HVAC upgrades
- Memorial: masonry and lighting upgrades
- Midland: paving and abatements
- Parkway: masonry, abatements, flooring and lighting upgrades

2022-2023 Revenue Budget



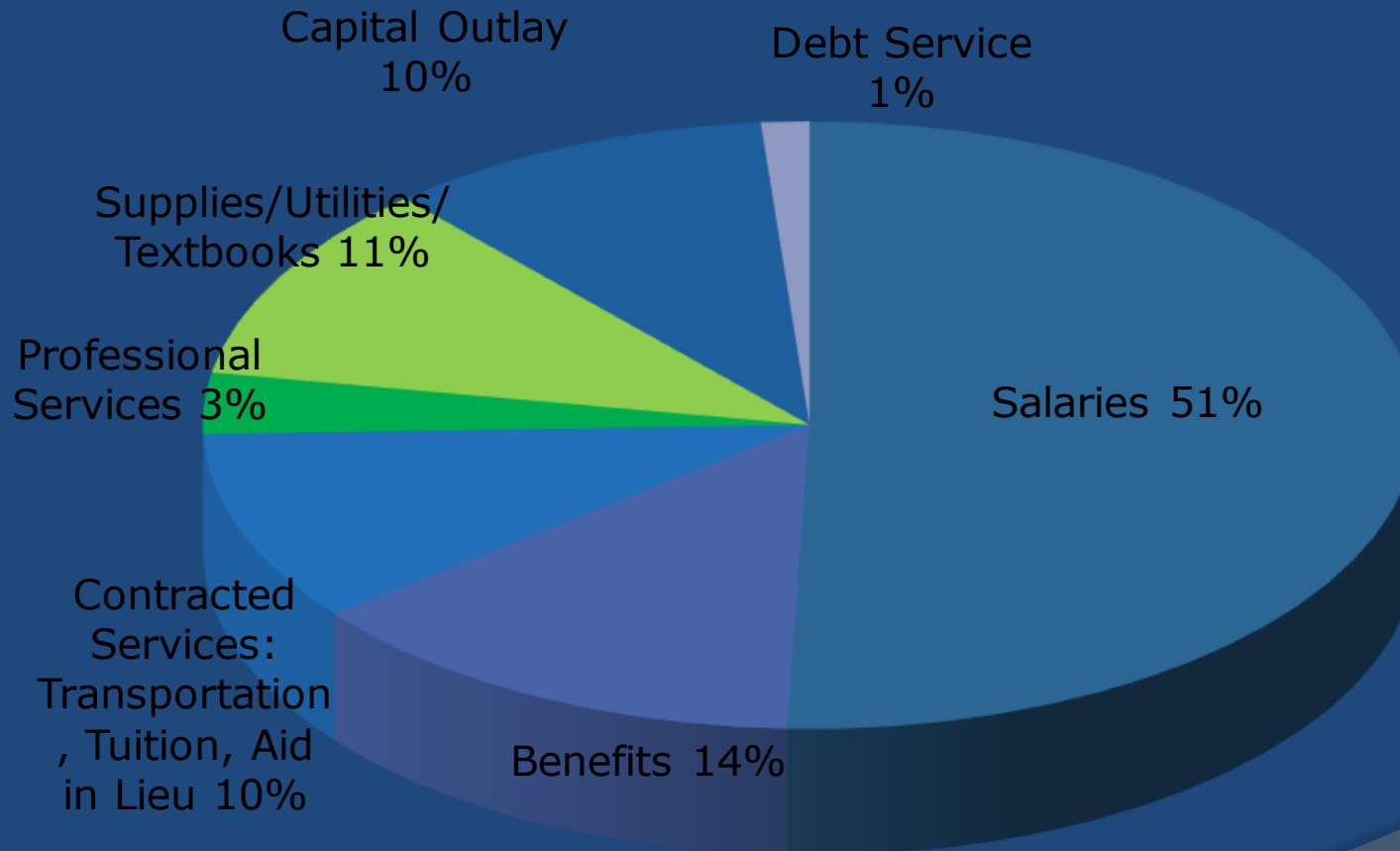
Tax Levy \$84,786,914
State Aid \$4,469,756
Revenue \$1,538,811
Capital Reserves \$10,581,813
Grants Restricted \$4,641,000
Fund Balance &
Debt Service \$1,987,663
Total Budget \$108,005,957

2022-2023 Appropriations Budget



Total Budget: \$108,005,957

2022-2023 Appropriations Budget

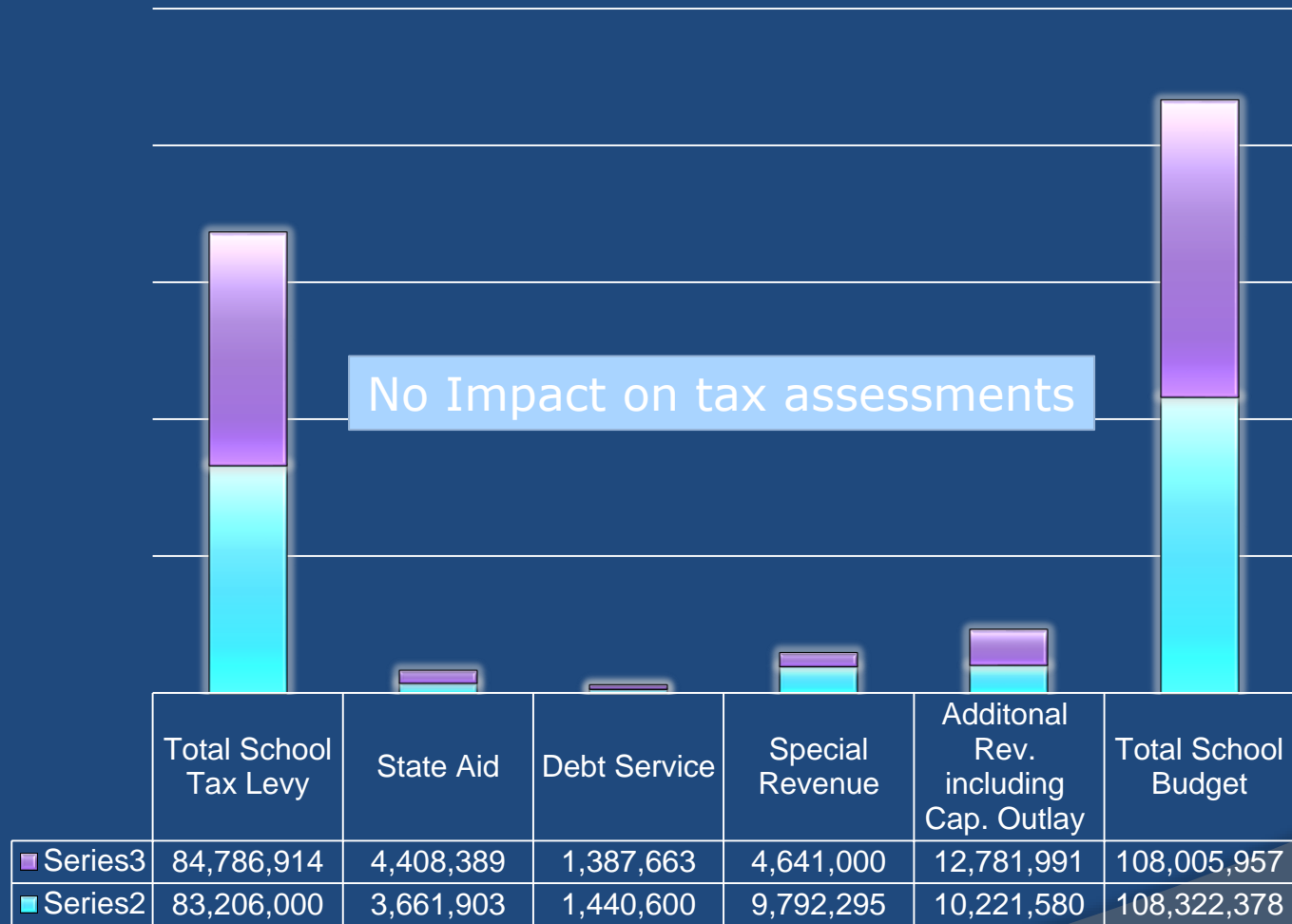


Total Budget: \$108,005,957

Budget Comparison:

Fund	2021-22 Adjusted	2022-23 Proposed	21-22 vs 22-23	
			\$ Diff	% Diff
Total School Tax Levy	83,206,000	84,786,914	1,580,914	1.90%
State Aid	3,661,903	4,408,389	746,486	20%
Debt Service	1,440,600	1,387,663	(52,937)	-3.67%
Special Revenue	9,792,295	4,641,000	(5,151,295)	-52.61%
Additonal Rev. including Cap. Outlay	10,221,580	12,781,991	2,560,411	25.05%
Total School Budget	108,322,378	108,005,957	(316,421)	-0.29%

Budget Comparison Year to Year



Tax Impact

Rate & Impact	Proposed, 1.9%
FY21 Rate per \$100 of Valuation:	0.0849
Decrease over FY20 Rate of 0.834:	0.1550
100,000 Assessed Value	\$849

Average House Assessed at \$704,275

Assessed Value	Tax 2021-22	Tax 2022-23	Annual Dollar Difference
\$ 500,000	\$ 4,168	\$ 4,245	\$ 77
\$ 704,275	\$ 5,870	\$ 5,980	\$ 109
\$ 900,000	\$ 7,502	\$ 7,642	\$ 140

Based on last year's net taxable valuation



Questions & Comments

www.paramus.k12.nj.us