



# JUNIOR COLLEGE MEETING

---

## **Paramus High School Guidance Department**

---

**Mrs. Mary Lou Baird, Supervisor**

**Mr. Joseph Gencarelli**

**Mrs. Kelly Hunsberger**

**Mrs. Nicole Ives**

**Ms. Ashwini Reddy**

**Ms. Daura Schucker**

**Ms. Sandra Vanderzee**



# TIMELINE



- **March – April**  
Junior Conferences
- **September 2012**  
Senior College Night
- **December 2012**  
Financial Aid Night

# GRADUATION REQUIREMENTS

---

- **Minimum Requirements**

- 4 years of English
- 4 years of Physical Education
- 3 years of History
- 3 years of Math
- 3 years of Science
- 1 year of World Language
- 5 credits of Visual & Performing Art
- 5 credits of Practical Art

- **120 Credits**

- **Proficient Score on the HSPA**



# TYPES OF COLLEGE

---

- Four-year Colleges/Universities
- Two-year Colleges
- Technical Institutes and Career Schools  
(Lincoln Tech, DeVry, Eastwick Colleges)
- Service Academies (Naval Academy)

# COLLEGE ENTRANCE EXAMS

---

**SAT – [www.collegeboard.com](http://www.collegeboard.com)**

- Reasoning test
- Ten-section exam
  - **3 Critical Reading:** short and long reading passages, sentence completion
  - **3 Math:** number and operations, algebra and functions, geometry and measurement, data analysis, statistics and probability
  - **3 Writing:** multiple-choice questions on grammar and usage and student written essay
  - **1 Experimental**

# COLLEGE ENTRANCE EXAMS

---

## ACT - [www.actstudent.org](http://www.actstudent.org)

- Curriculum Based
- Four-section exam
  - **Math:** skills up to and including Trigonometry
  - **Science:** interpretation, analysis, evaluation, reasoning, and problem-solving skills required in the natural sciences
  - **Reading:** Measures reading comprehension
  - **English:** Measures standard written English and rhetorical skills

**Essay:** Measures writing skills emphasized in high school English classes and in entry-level college composition courses.

# SAT

[www.collegeboard.com](http://www.collegeboard.com)

## **Test Dates**

March 10, 2012

May 5, 2012

June 2, 2012

October 2012

November 2012

December 2012

## **Registration**

Late Fee Applied

April 6, 2012

May 8, 2012

Pending

Pending

Pending

# ACT

[www.actstudent.org](http://www.actstudent.org)

## **Test Dates**

April 14, 2012

June 9, 2012

September 2012

October 2012

December 2012

## **Registration**

March 9, 2012

May 4, 2012

Pending

Pending

Pending

# **SAT/ACT**

## **REGISTRATION INFORMATION**

---

- CEEB CODE – 311073
- Register ASAP to secure a space at PHS
- The name you register with must match the name on your PHS Transcript
- Photo ID is required to take entrance exams
- Bring your calculator, pencils and admissions ticket

**If you have an IEP or 504 and have been approved to receive accommodations, be sure to follow the registration procedures.**

# TEST OPTIONAL SCHOOLS

---

## Fairtest.org

- A complete list is available online. In lieu of SAT/ACT scores, you may be asked to submit additional materials
  - Sacred Heart University
  - Drew University
  - Gettysburg College
  - Muhlenberg College
  - University of Scranton
  - Loyola University
  - Salisbury University



# NAVIANCE

---





- A web-based program that allows you to research information about colleges and careers
- An integral part of PHS college application process
- All students have been registered since 9<sup>th</sup> grade
- Parents have access to an account. Please call x3086 for your registration code

**Naviance Website**  
[connection.naviance.com/paramus](http://connection.naviance.com/paramus)

## pages

- [act testing](#)
- [sat testing](#)
- [test taking tips](#)
- [college spotlight](#)
- [college timeline](#)
- [application plans](#)
- [junior spotlight](#)
- [career spotlight](#)
- [course selection](#)

## links

- [collegeboard](#) 
- [act](#) 
- [virtual college tour](#) 
- [ncaa eligibility](#) 

## what's new

- ✉ You received an e-mail: [Rensselaer's Design Your Future Day](#) from Ashwini Reddy.
- ✉ You received an e-mail: [CAREER DAY PERMISSION SLIPS](#) from Joseph Gencarelli.
- ✉ You received an e-mail: [Triple-Impact Competitor Scholarship](#) from Ashwini Reddy.

[more since last visit](#)

✉ You have [17 new messages](#)

 [document library](#)

✉  [contact us](#)

## CLASS OF 2013

### PARAMUS HIGH SCHOOL GUIDANCE DEPARTMENT

PHS CEEB Code: 311073

Mrs. Baird, Supervisor

#### COUNSELORS

Mr. Gencarelli | Mrs. Hunsberger | Mrs. Ives | Ms. Reddy | Ms. Schucker | Ms. Vanderzee

- [COURSE SELECTION](#)
- [JUNIOR SPOTLIGHT](#)
- [COLLEGE PLANNING MEETING](#) *(Student Presentation)*
- [APPLICATION PLANS](#)

# NAVIANCE

---

## ABOUT ME

- My Profile – GPA information
- Test Scores
- My Game Plan
- Resume



# ACTIVITY RESUME

---

- Athletics
- Clubs
- Employment
- Community Service

## RESUME WRITING WORKSHOP

Tuesday, April 3, 2012

During Lunch Periods

Registration is required on Naviance

# NAVIANCE

---

## CAREERS

- Explore Careers / Career clusters
- Career Interest Profiler

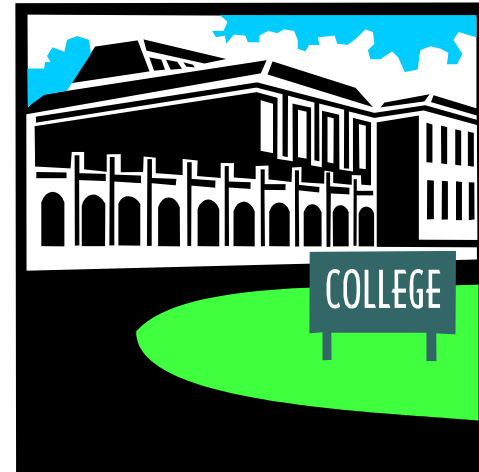


# NAVIANCE

---

## COLLEGES

- College Search
- Colleges I'm Thinking About
- College Lookup
- College Match
- College Compare
- Scattergrams
- College Visit Schedule
- Scholarship List
- Enrichment (Summer) Programs



# COLLEGE SEARCH

---

- ✓ **Competitiveness** – Be realistic
- ✓ **Programs/Majors**
- ✓ **Location** (urban/suburban/rural/distance)
- ✓ **Cost / Financial Aid**
- ✓ **Size**
- ✓ **Campus Life**
- ✓ **Housing Options**
- ✓ **Athletics**
- ✓ **Special Programs**

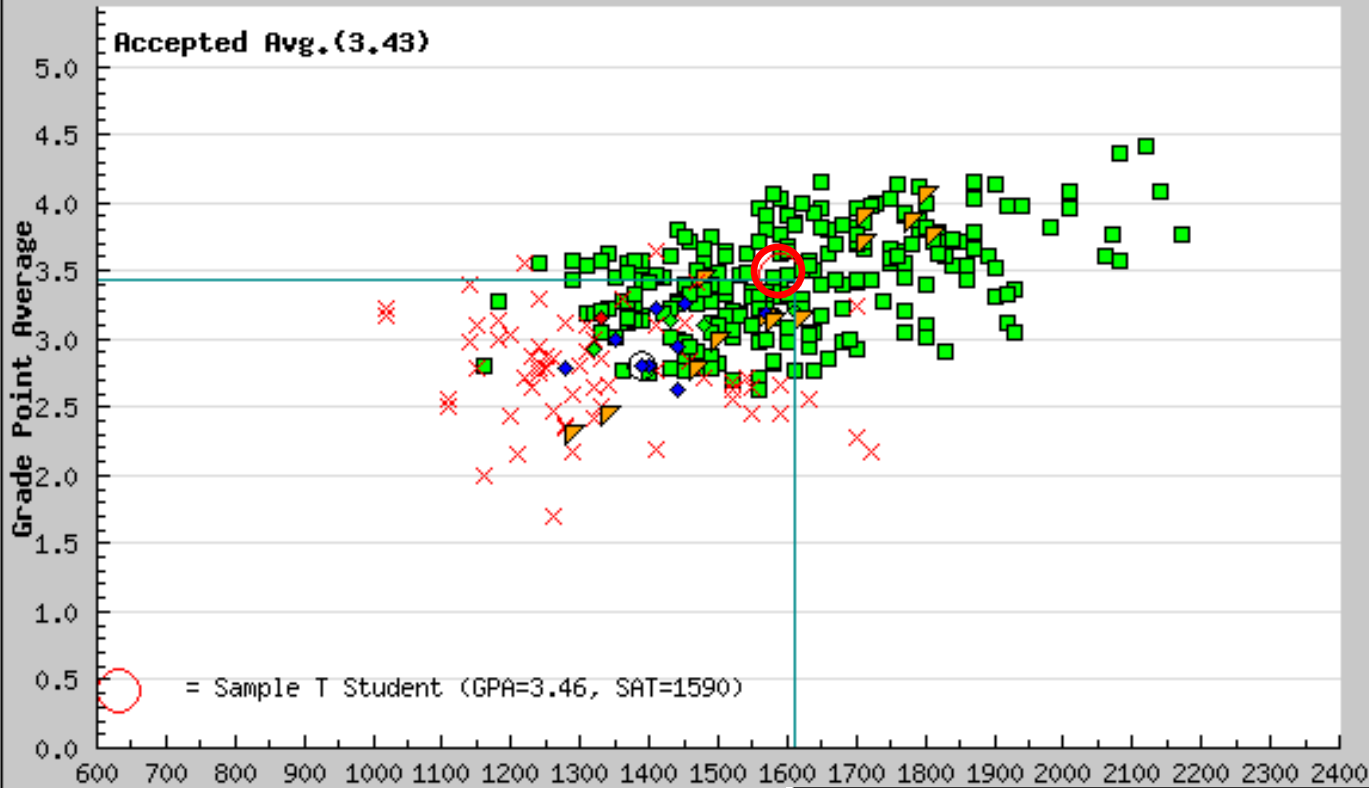


# COMPARE ME

	GPA	PSAT to SAT 1600	PSAT to SAT 2400	Single SAT 1600	Combined SAT 1600	Single SAT 2400	Combined SAT 2400	PLAN to ACT	ACT	IB	Accept
Sample T Student	3.46	-	-	-	1060	1590	1590	-	26	-	-
<a href="#">Amherst Coll</a>					--insufficient data--						
<a href="#">Andrew Jackson Univ</a>					--insufficient data--						
<a href="#">Arizona State Univ</a>	3.38	-	1448	-	956	1448	1466	24	24	-	6/8
<a href="#">Cornell Univ</a>	4.17	-	2139	-	1439	2139	2144	32	32	-	15/101
<a href="#">Kean Univ</a>	3.10	-	1456	-	986	1456	1478	21	21	-	63/93
<a href="#">U of MA Amherst</a>	3.62	-	1709	-	1144	1709	1730	25	25	-	110/147
<a href="#">Montclair State Univ</a>	3.41	1020	1593	1020	1068	1593	1609	22	22	-	253/398
<a href="#">NCAA</a>					--insufficient data--						
<a href="#">The College of New Jersey</a>	3.87	-	1936	-	1304	1936	1956	27	27	-	144/302
<a href="#">New York Univ</a>	3.96	-	2036	-	1375	2036	2056	30	30	-	45/143
<a href="#">Ramapo Coll of NJ</a>	3.56	-	1677	-	1123	1677	1697	24	24	-	174/341
<a href="#">Rutgers Camden</a>	3.29	-	1703	-	1158	1703	1726	24	24	-	9/12
<a href="#">Rutgers New Brunswick</a>	3.74	1185	1844	1185	1245	1844	1863	27	27	-	479/664
<a href="#">Springfield Coll</a>	3.10	-	1506	-	990	1506	1515	24	24	-	10/15
<a href="#">St. John's University - Queens Campus</a>	3.42	-	1674	-	1132	1674	1694	24	24	-	129/171
<a href="#">William Paterson Univ of NJ</a>	3.17	-	1485	-	1002	1485	1500	21	21	-	197/318

# SCATTERGRAM GRAPH

Montclair State University  
 Paranus High School  
 SAT (2400) vs. GPA Scattergram (2007-2012): Sample T Student



Copyright Naviance, LLC

## Graph Legend

- |                                      |                                    |
|--------------------------------------|------------------------------------|
| ■ Accepted                           | ◆ Waitlisted                       |
| × Denied                             | ◆ Waitlisted/Accepted              |
| ⊞ Accepted (Early Decision)          | ◆ Waitlisted/Denied                |
| ⊞ Denied (Early Decision)            | ⊞ Accepted (Early Action)          |
| ⊞ Deferred (Early Decision)          | ⊞ Denied (Early Action)            |
| ⊞ Deferred/Accepted (Early Decision) | ⊞ Deferred/Accepted (Early Action) |
| ⊞ Deferred/Denied (Early Decision)   | ⊞ Deferred/Denied (Early Action)   |

# COLLEGE VISITS

- Quad/Hangout Spots
- Dorms
- Dining Halls
- Classrooms
- Speak with Admissions Rep
- Health Center



- Gym / Athletic Center
- Bookstore
- Talk to Students
- Campus Surroundings
- Visit Department of Major

# HOW DO COLLEGES EVALUATE APPLICANTS?

---

- **Transcript**
  - Academic performance (Senior year counts)
  - Level of courses (CP, Honors, AP)
- **College Entrance Exams**
- **Activities** (volunteer work, school clubs, athletics)
- **Teacher recommendations**
- **Counselor recommendation**
- **Essay and/or Personal Statement**

# **COMMON MISTAKES WHEN CONSIDERING COLLEGES**

---

- Not doing the research
- Following the lead of friends
- Not considering a school beyond NJ
- Looking at schools based only on the name or location
- Relying on ranking in news magazines
- Not visiting the campus

# ADMISSIONS TERMS

---

- **Regular**
- **Rolling**
- **Priority**
- **Early Decision** (binding)
- **Early Action** (non-binding)
- **Restrictive Early Action**



# HOW MANY SCHOOLS SHOULD YOU APPLY TO?

---

- **We strongly recommend applying to 5-7 schools**
  - **Reach** – your academic achievement is below the admission criteria
  - **Target** - admission standards closely match your qualifications
  - **Likely** - your academic achievement exceeds the admission criteria



# FAFSA

Free Application for Federal Student Aid

---

- FAFSA can only be completed online *after* January 1, 2013 [fafsa.ed.gov](http://fafsa.ed.gov)
- FAFSA4caster will help you get an estimate of your eligibility for federal student aid [www.fafsa4caster.ed.gov](http://www.fafsa4caster.ed.gov)

**FINANCIAL AID NIGHT**

**December 2012**

**Paramus High School**

# FINANCIAL AID

---

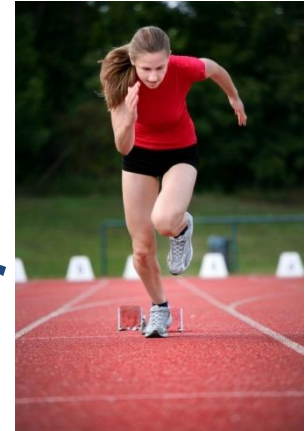
- **Net Price Calculator-Available on every college's financial aid website**
- **CSS Profile- Required for some private schools (College Board)**
- **Scholarship Newsletter is available on Naviance and on our website.**
- **Check [fastweb.org](http://fastweb.org), [finaid.org](http://finaid.org) and your workplace for scholarships**



# NCAA REQUIREMENTS

---

- **For Division I & II athletes**
  - 16 Core Academic Units
- **Speak with your coach and counselor**
- **Register at the NCAA Eligibility Center website over the summer**
- **SAT / ACT scores must be sent officially to the NCAA**



**[www.eligibilitycenter.org](http://www.eligibilitycenter.org)**

# BEFORE JUNE

---

## Junior students should have:

- ✓ Taken the SAT/ACT at least once (Subject Tests if needed)
- ✓ Completed English assignment for your counselor (details to follow)
- ✓ Created a list of “*colleges I’m thinking about*” in Naviance (mandatory)
- ✓ Asked two teachers for recommendations



# MARK YOUR CALENDAR

---

**CAREER DAY**

**Thursday, May 24<sup>th</sup>**

**COLLEGE PANEL FOR STUDENTS WITH AN IEP/504**

**Tuesday, March 27<sup>th</sup>**

**PHS COLLEGE FAIR**

**Thursday, April 12<sup>th</sup>**

**COLLEGE PANEL**

**Thursday, May 3<sup>rd</sup>**

# QUESTIONS

---

